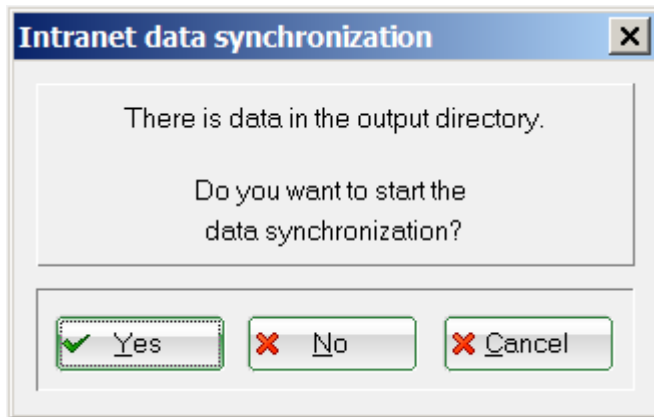


Close PC CADDIE

You can close the program via the menu **Exit/Close PC CADDIE**. You can also click on the „x“ from the top-right corner of the window.



The program asks once more if you want to make a intranet data synchronization before closing.



Press **Yes** if you have data to upload, **No** when you don't want to upload anything, and **Cancel** if you want to keep the program opened.

Pressing Return/Enter on the keyboard means **Yes**.